



© COPYRIGHT 2019 MDF ITALIA SRL SOCIETA' UNIPERSONALE

2014-2019

## ROCK TABLE

Designed by Jean Marie Massaud

NOVELTIES 2019

The elegant silhouette of the Rock Table table is enriched with new finishes: top in textured bleached oak for the bases in natural cement and top in textured anthracite oak for the bases in anthracite grey cement.

### ROCK TABLE

A mixture of natural and industrial materials, that are blended to create a new product with a smooth design. A refined solid object, light and stable, radical as well as sensual.

Rock Table is a collection of tables suited to both home and contract settings, with bases in UHPFRC cement in natural or anthracite. Two types of bases: narrow with 80 and 100cm large tabletops or wide with 120 and 140cm large tabletops. H110 or 73cm for tables with narrow bases, H 73cm (or 71.5 with top in smoked glass) for tables with wide base.

### TABLETOP WITH BASES IN NATURAL CEMENT

- MD-wood fibreboard in thickness 25mm with finished edge, in white matt lacquer with a scratch-proof finish (80, 100, 120, 140cm);
- white UHPFRC cement (ultra-high performance fibre-reinforced cement) with cutting-edge technical/structural properties (80, 100, 120, 140cm);
- textured bleached oak, 25 mm thick with processed edge (80, 100, 120, 140 cm).

### TABLETOP WITH BASES IN ANTHRACITE GREY CEMENT

- MD-wood fibreboard in thickness 25mm with finished edge, matt grey lacquer with a scratch-proof finish (80, 100, 120, 140cm);
- anthracite UHPFRC cement (ultra-high performance fibre-reinforced cement) with cutting-edge technical/structural properties (80, 100, 120, 140cm);
- smoked tempered glass in thickness 12mm (120, 140cm tabletops);
- textured anthracite oak, 25 mm thick with processed edge (80, 100, 120, 140 cm).

## FRAME

The bases are made of UHPFRC (ultra-high performance fibre-reinforced cement) with cutting-edge technical/structural properties.

A fundamental characteristic of the components is mass colouration. The finish and colour of the table bases is the result of a skilled mixture of sand and natural elements. Together with the slow maturation and drying given to each piece, this allows countless subtle shades to be obtained.

## OUTDOOR USE

The table with cement top is also suitable for outdoor.

## ROCK TABLE



### TABLES WITH WIDE BASE

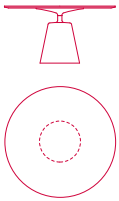


TABLE Ø140 H71.5\* and H73 cm  
BASE Ø50 H51 cm

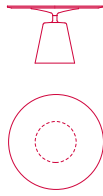


TABLE Ø120 H71.5\* and H73 cm  
BASE Ø50 H51 cm

\*tables with glass top H 71.5 cm

### TABLES WITH NARROW BASE

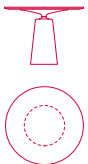


TABLE Ø100 H73 cm  
BASE Ø34 H57 cm



TABLE Ø80 H73 cm  
BASE Ø34 H57 cm

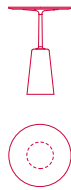


TABLE Ø80 H110 cm  
BASE Ø34 H57 cm

# Finishing

The number in the dot corresponds to the number of colour/material finish.

Here below, in the section FINISH OPTIONS, please note all the colours of the materials used for this product.

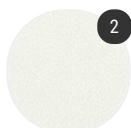
## TABLE

---

### Top



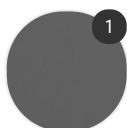
Cement



Matt lacquered



Oak



Glass

---

### Structure



Cement

# Finish options

## TOP

---

### Cement



Cement white



Cement  
anthracite

### Matt lacquered



Matt  
lacquered  
white X042



Matt  
lacquered  
graphite grey  
X082

### Oak

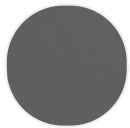


Textured  
bleached oak



Textured  
anthracite  
oak

### Glass



Smoked grey  
tempered  
glass

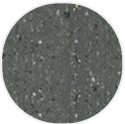
## STRUCTURE

---

Cement



Cement  
natural X080



Cement  
anthracite  
X081